

User Manual
Software Installation
Gateway Solutions



CONNECTED BY
netx

Gateway Solutions

- SYCON.net Configuration and Diagnostic Tool Installation
- Documentation
- Drivers
- Power Point Presentation
- netSCRIPT Debugger

netTAP netBRICK
netLINK

AS CANopen CC-Link DeviceNet EtherCAT Technology Group EtherNet/IP ETHERNET POWERLINK MODBUS

PROFIBUS PROFIBUS-DP SERCOS Interface

hilscher
COMPETENCE IN
COMMUNICATION

Hilscher Gesellschaft für Systemautomation mbH

www.hilscher.com

DOC100315UM03EN | Revision 3 | English | 2010-07 | Released | Public

Table of Contents

1	INTRODUCTION.....	3
1.1	About the User Manual.....	3
1.1.1	List of Revisions	3
1.1.2	Conventions in this Manual	4
1.2	Contents of the Product DVD	5
1.2.1	Directory Structure of the DVD.....	5
1.3	Configuration Requirements.....	6
1.4	Requirements to view the Documentation	6
2	INSTALLING SOFTWARE	7
2.1	Install SYCON.net Software	8
2.2	Install netSCRIPT Debugger	15
3	APPENDIX	24
3.1	List of Figures	24
3.2	List of Tables.....	24
3.3	Contacts.....	25

1 Introduction

1.1 About the User Manual

This user manual describes the structure of the DVD named Gateway Solutions. It describes the installation of the software necessary for the configuration of the devices described on this DVD.

1.1.1 List of Revisions

Index	Date	Chapter	Revisions
1	2010-03-29	all	created
2	2010-06-18	2.1	Notes about major changes in SYCON.net are displayed during installation of SYCON.net
3	2010-07-12	2.1	SYCON.net V1.300.x.x

Table 1: List of Revisions

1.1.2 Conventions in this Manual

Operation instructions, a result of an operation step or notes are marked as follows:

Operation Instructions:

➤ <instruction>

Or

1. <instruction>

2. <instruction>

Results:

⇒ <result>

Notes:



Important: <important note>



Note: <note>



<note, were to find further information>

1.2 Contents of the Product DVD

The DVD contains:

- Hardware description of the devices netBRICK, netTAP 100, netTAP 50, netTAP 40 and netTAP 30 in .pdf format
- Software documentation for the configuration software SYCON.net
- Software documentation for netSCRIPT
- Software installation for the configuration software SYCON.net
- Software installation for the netSCRIPT debugger
- Software installation for LUA for Windows to train the SCRIPT-programming language (in the folder: Software\Lua for Windows\)
- Firmware for protocol conversions
- Device Description files
- Driver for the communication with the devices
- AVI video demonstration about the usage of the devices and the software.

The video „Gateway Commissioning Example Video-Audio HiRes.avi“ introduces into the configuration and diagnostic possibilities of SYCON.net together with the device.

The video „netSCRIPT Video-Audio Tutorial HiRes - Hello World.avi“ shows the possibilities of netSCRIPT and the Debugger using the netTAP NT 100 device

These videos are in english language.

- Product presentations in .pps format for the devices netBRICK, netTAP 100, netTAP 50 and the script language netSCRIPT for the netTAP 100 device.

1.2.1 Directory Structure of the DVD

Directory Name	Description
Adobe Flash Player	Adobe Flash Player installation program
Documentation	Documentation in the Acrobat® Reader Format (PDF)
Driver	USB driver for Windows (for netTAP NT 100 and netBRICK)
EDS	Device Description File
Examples	netScript programming examples, for netTAP 100
Firmware	Loadable Firmware
fscommand	Help files for the installation program
Presentations	pps product presentations
Software	Configuration and diagnostic program SYCON.net
Video-Audio Tutorials	avi video product presentation for the configuration of the gateway and netSCRIPT applications

Table 2: Directory Structure of the DVD

1.3 Configuration Requirements

The configuration software SYCON.net must be installed on a PC. The requirements for the PC are:

- PC with 1 GHz processor or higher
- Windows® 2000 and Windows® XP
- Internet Explorer 5.5 or higher
- Free disk space: min. 400 MByte
- DVD ROM drive
- RAM: min. 512 MByte, recommended 1024 MByte
- Graphic resolution: min. 1024 x 768 pixel
- Keyboard and Mouse



Note: If the project file is saved and opened again or it is used on another PC, the system requirements need to match. Particularly the DTMs need to be installed on the used PC.

1.4 Requirements to view the Documentation

- To view the documentation the software Adobe Reader has to be installed on the PC
- To view the presentations Power Point or Power Point Viewer has to be installed.
If this is not the case, the Power Point Viewer can be installed from the DVD from the directory "Presentations\Power Point Viewer"
- To view the video introduction the Windows Media Player or an other video player software has to be installed, which can play .avi files. Also audio output is necessary on the PC.

2 Installing Software

The software installation installs the following components:

- The SYCON.net configuration software
- The netSCRIPT debugger (optional).

1. Insert DVD

➤ Insert the Gateway Solution DVD into your local DVD ROM drive.

⇒ If the auto start function is activated, the “Gateway_Solutions.exe“ program starts automatically.

If the auto start function is deactivated, then start the “Gateway_Solutions.exe“ program in the root directory of the DVD manually.



Figure 1: Gateway Solutions Start Screen

2. Start the installation of SYCON.net

➤ Select with the mouse the first entry “**SYCON.net Configuration and Diagnostic Tool Installation**“.



Note: Administrator privileges are required on Windows® XP systems for installation!

⇒ The installation program for SYCON.net software starts.

2.1 Install SYCON.net Software

1. Language for the setup



Figure 2: SYCON.net Setup Language

- ① Select the language for the setup
- ② Click on **OK**.

2. Continue installation

- Click on **Next >** to continue the installation.

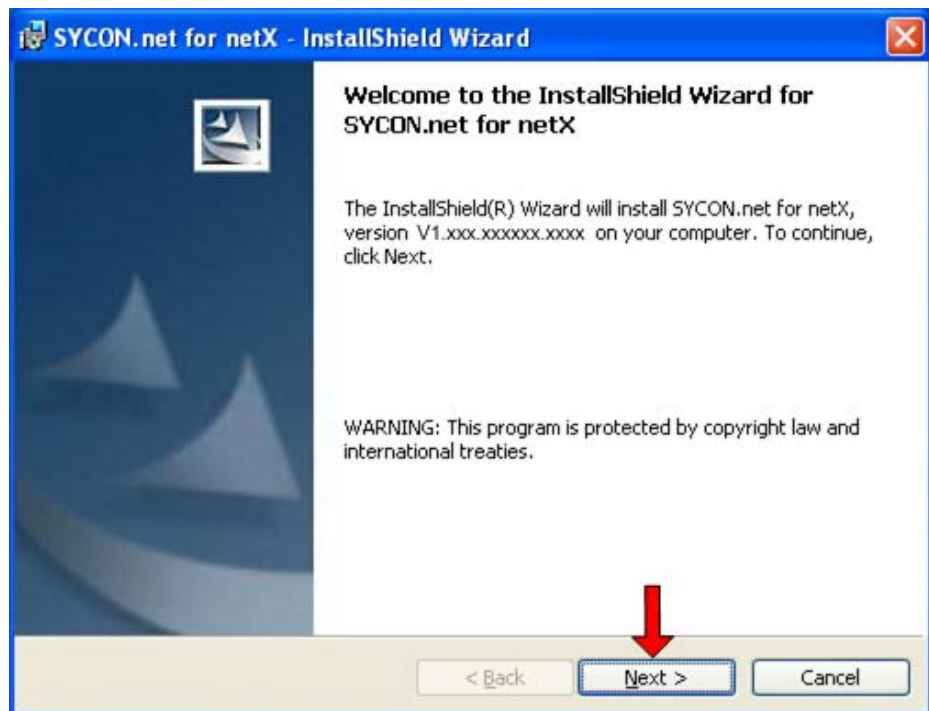
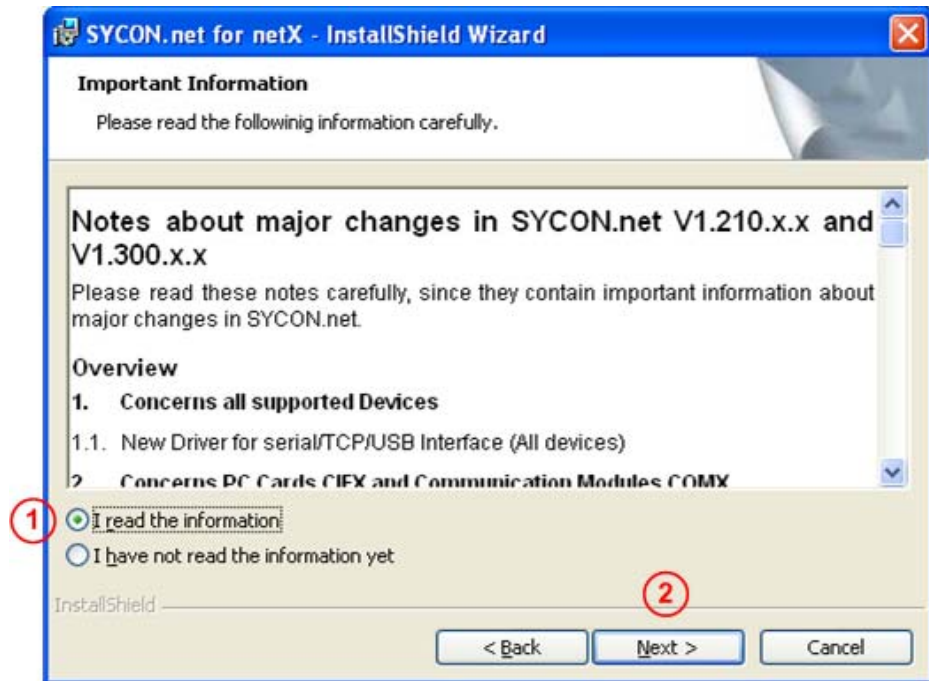


Figure 3: SYCON.net Installation Information

3. Read the notes about major changes in SYCON.net



- Read the note about major changes in SYCON.net carefully.
- **1** Select **I read the information**, when you have read them.
- **2** Click on **Next >** to continue the installation.

4. Accept license agreement

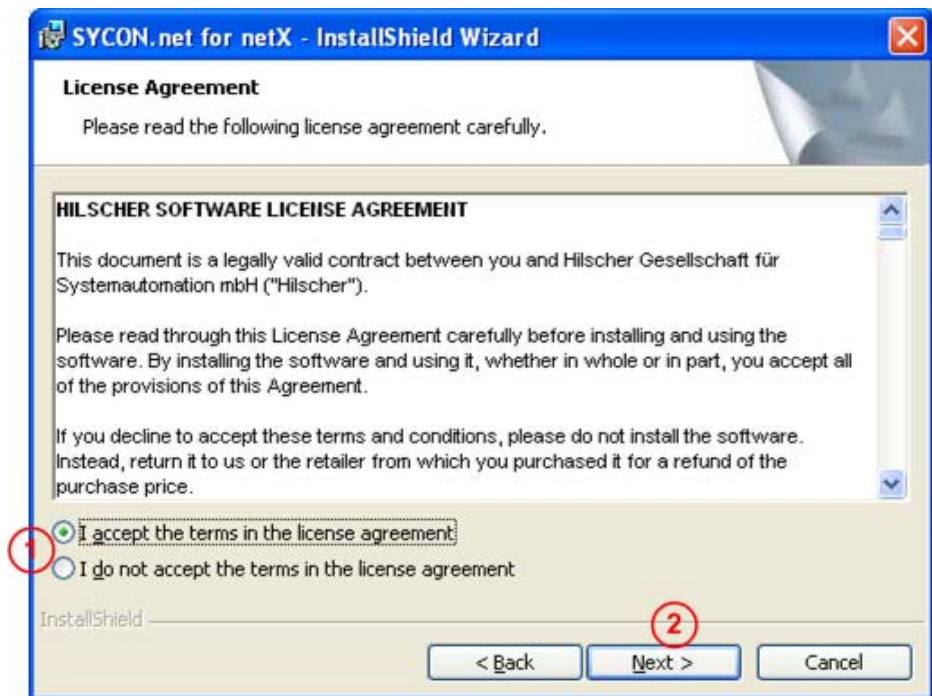


Figure 4: SYCON.net License Agreement

- ① Select **I accept the terms in the license agreement**, when you agree to it.
- ② Click on **Next >** to continue the installation.

5. Enter user information

Customer Information
Please enter your information.

User Name:
Hilscher

Organization:
Hilscher GmbH

Install this application for:

Anyone who uses this computer (all users)

Only for me (Hilscher)

InstallShield

< Back Next > Cancel

Figure 5: SYCON.net Customer Information

- ① Enter the user name and the name of the organization
- ② Select the user(s) the software is installed for.
- ③ Click on **Next >** to continue the installation.

6. Select setup type

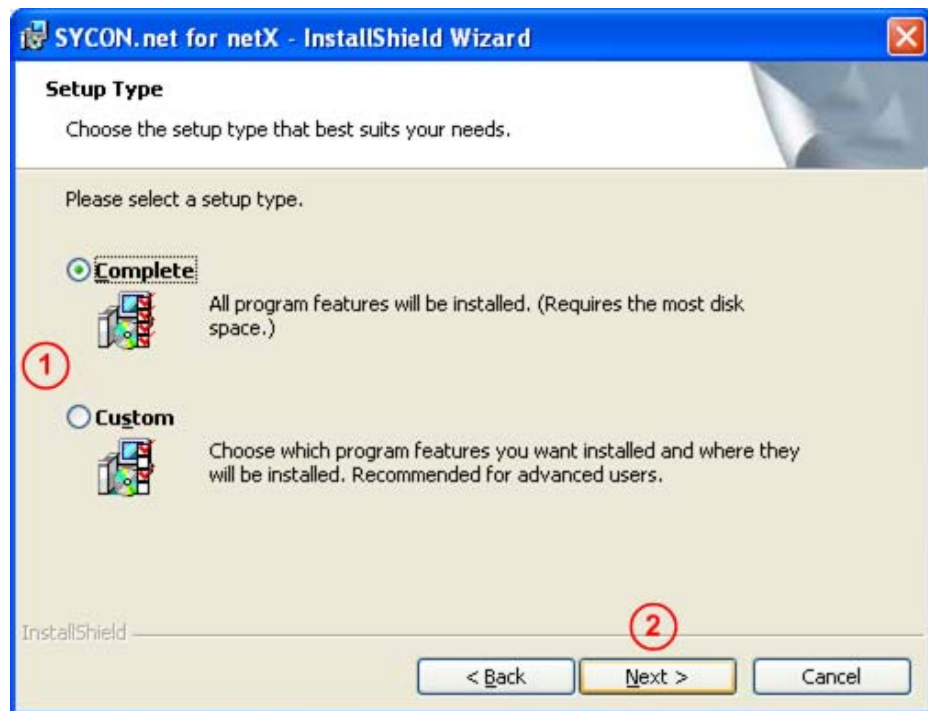


Figure 6: SYCON.net Setup Type

- ① Select **Complete** when you want to install the complete software.
- ② Click on **Next >** to continue the installation.

7. Installation

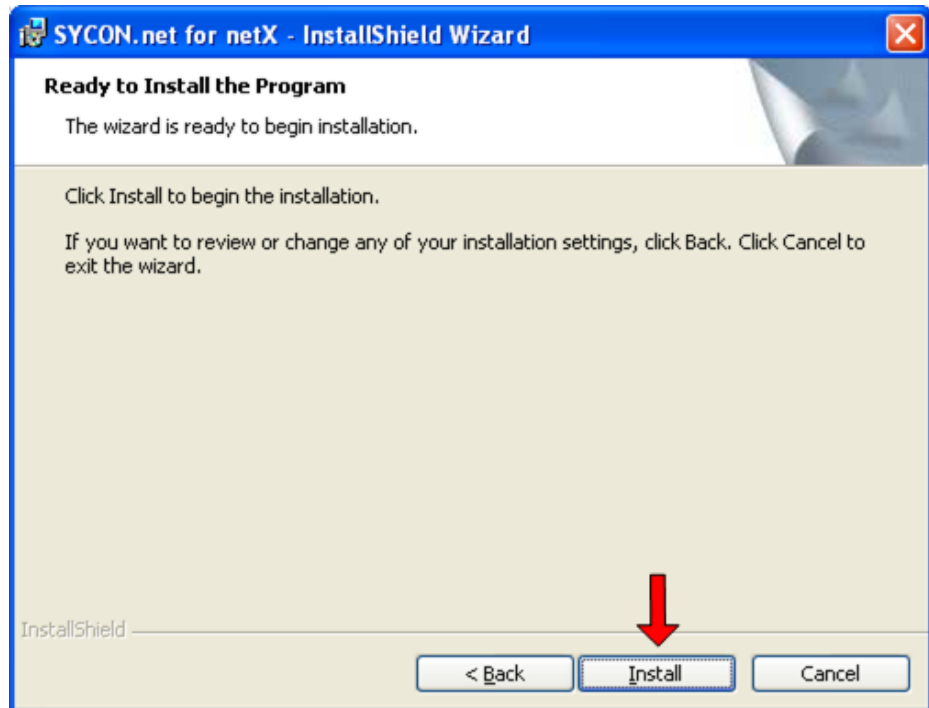


Figure 7: SYCON.net Start Installation

- Click on **Install** to do the installation now.
- The components are installed. This will take several minutes.

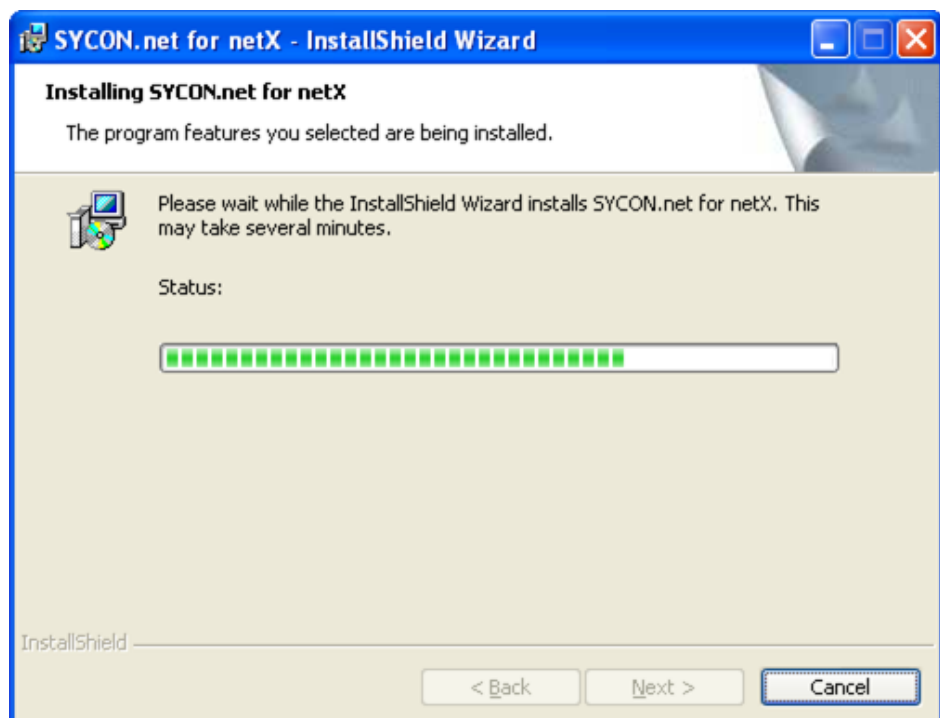


Figure 8: SYCON.net Installation Status

8. Finish installation



Figure 9: SYCON.net Installation Finish

- Click on **Finish**
- The software is installed.

2.2 Install netSCRIPT Debugger

If you use netSCRIPT, then install the debugger for debugging your scripts.

1. Start the installation of the debugger
 - Select with the mouse the entry “netSCRIPT Debugger“.



Figure 10: Start of the netSCRIPT Debugger Installation

- The window of the Debugger installation opens.

2. Language for the setup

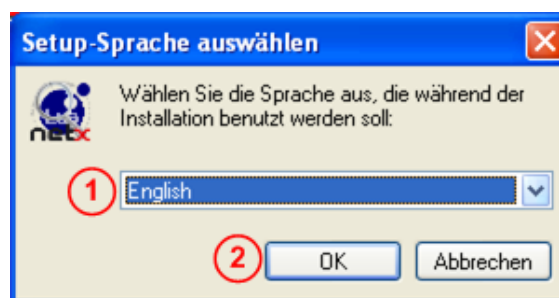


Figure 11: Select netSCRIPT Debugger Language for Setup

- ① Select the language for the setup
- ② Click on **OK**.
- The netSCRIPT-Debugger installation window opens.

3. Continue Installation

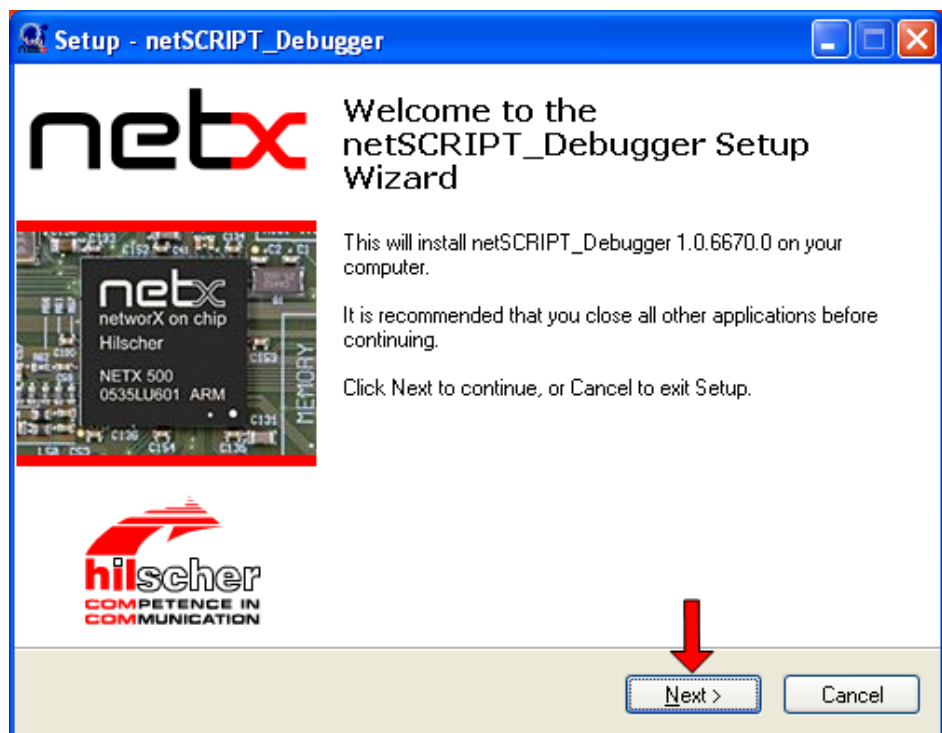


Figure 12: netSCRIPT Debugger Installation Window

- Click on **Next >** to continue the installation.
- The license agreement window opens

4. Accept license agreement

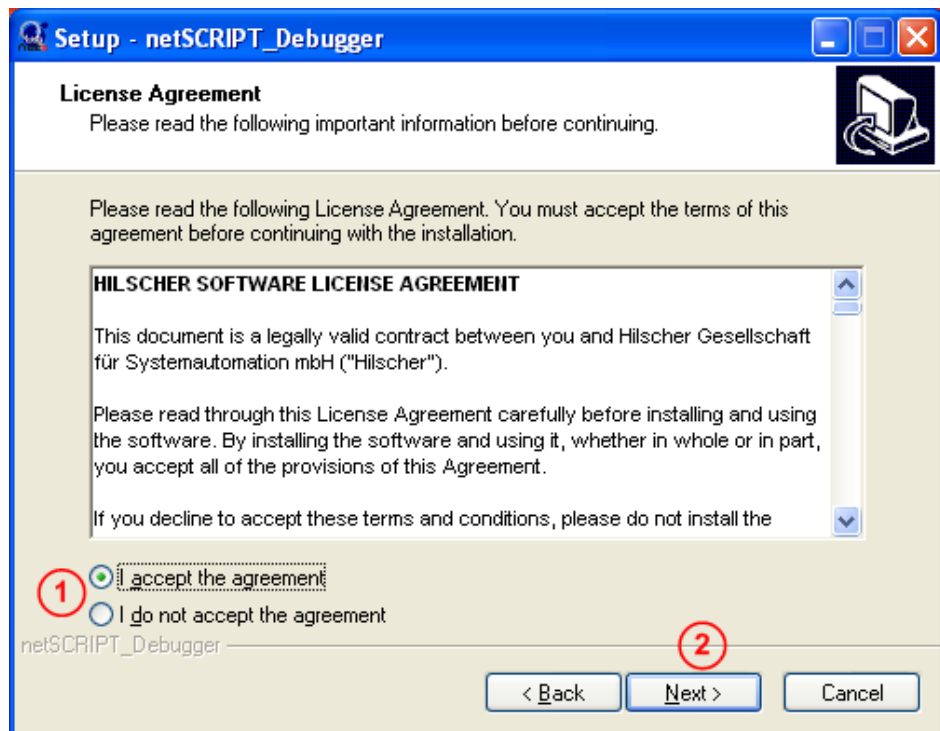


Figure 13: netSCRIPT Debugger License Agreement

- ① Click on I accept the agreement
- ② Click on **Next >**.
- The select Destination Location window opens

5. Select Destination Location

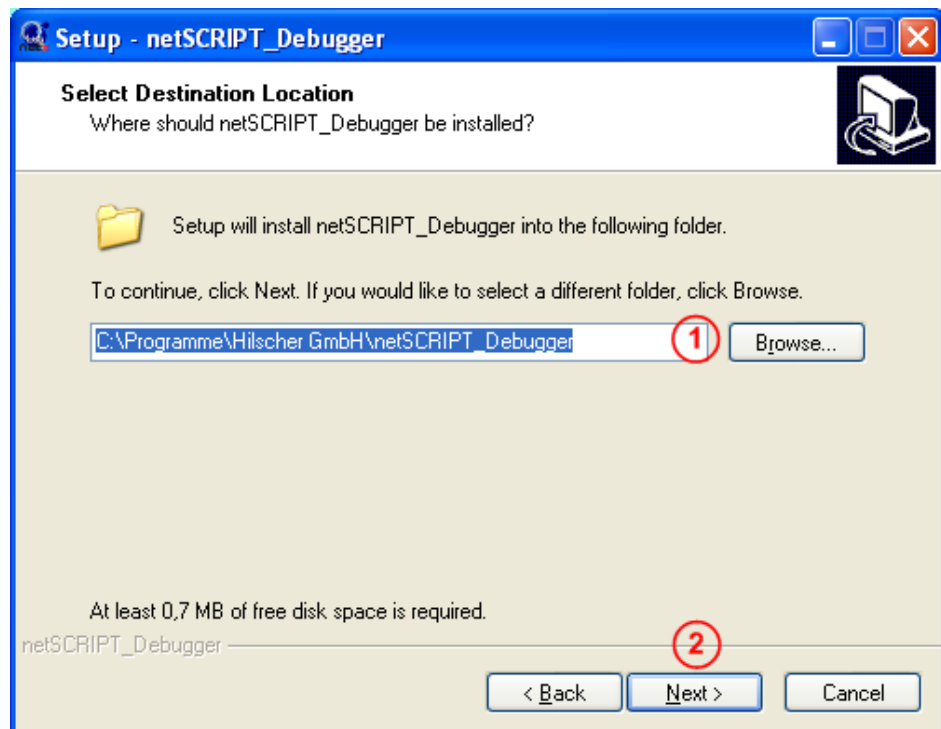


Figure 14: netSCRIPT Debugger Destination Location

- ① Select/Set the destination folder.
- ② Click on **Next >**.
- The Select Components window opens

6. Select Components

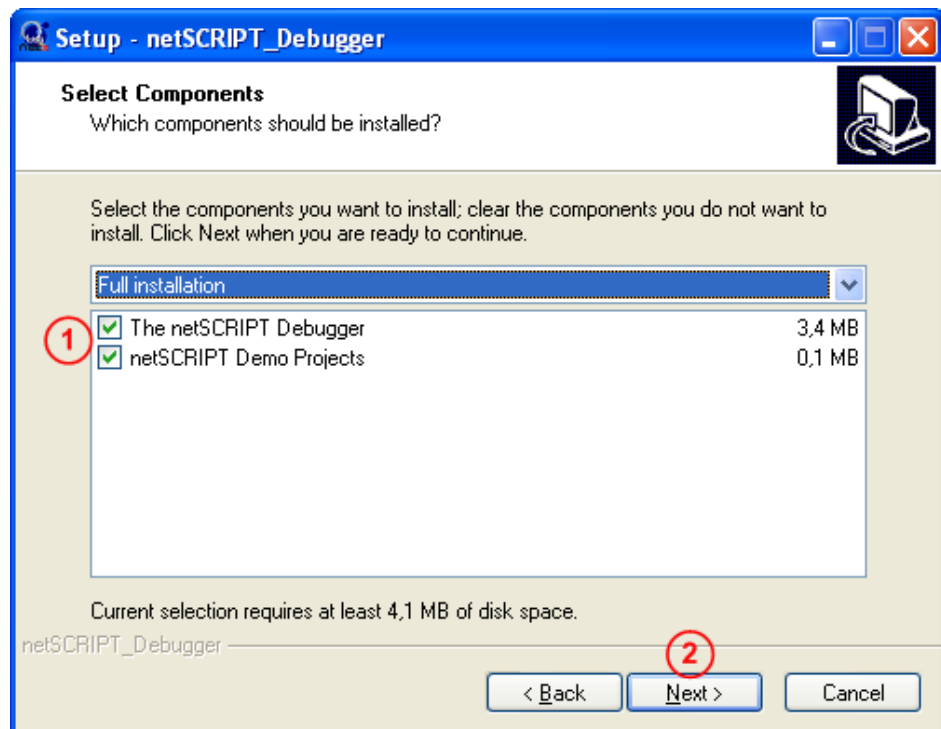


Figure 15: netSCRIPT Debugger – Select Components

- ① Select the components to be installed. The line The netSCRIPT Debugger should be always selected.
The example projects will be installed into the folder „\projects“, which will be in the destination folder selected in the next window.
- ② Click on **Next >**.
- The Select Start Menu Folder windows open.

7. Select Start Menu Folder

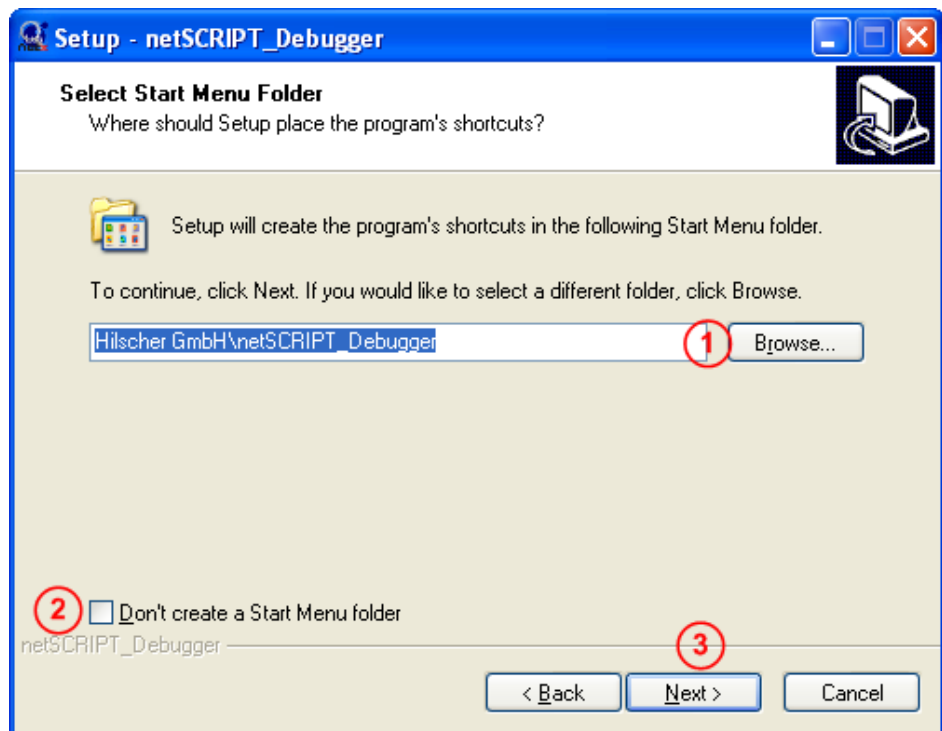


Figure 16: netSCRIPT Debugger Start Menu Folder

- ① Select/Set the destination folder for the debugger.
- ② Possibly prevent the integration into the start menu.
- ③ Click on **Next >**.
- The Select Addition Task window opens.

8. Select the positions for the icon

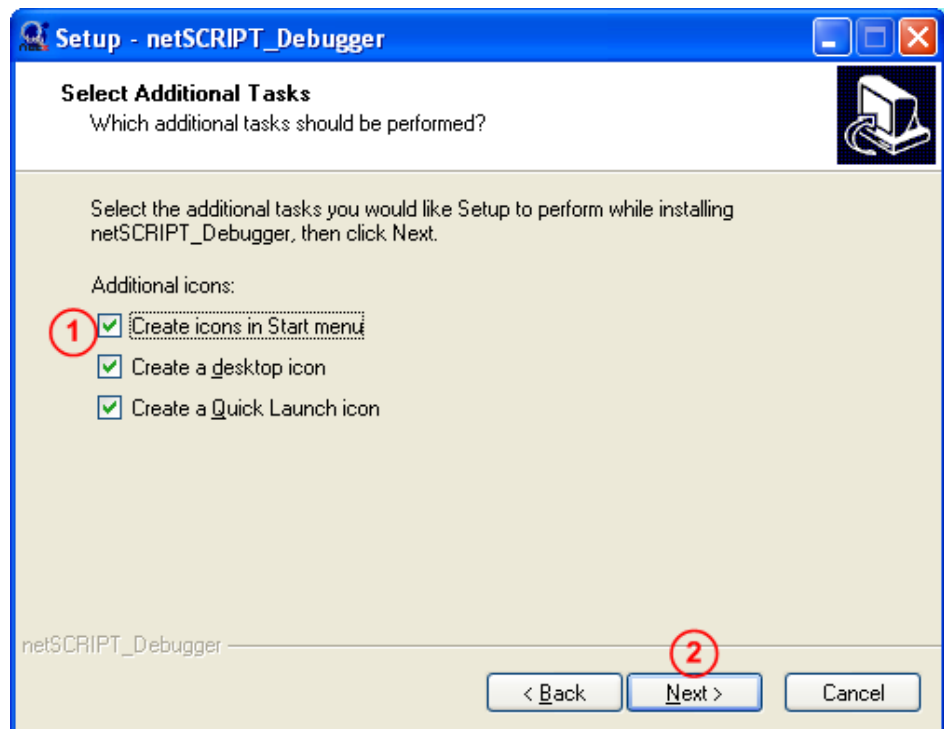


Figure 17: netSCRIPT Debugger – Icon Positions

- ① Select the icon positions
- ② Click on **Next >**.
- The summary window opens.

9. Installation

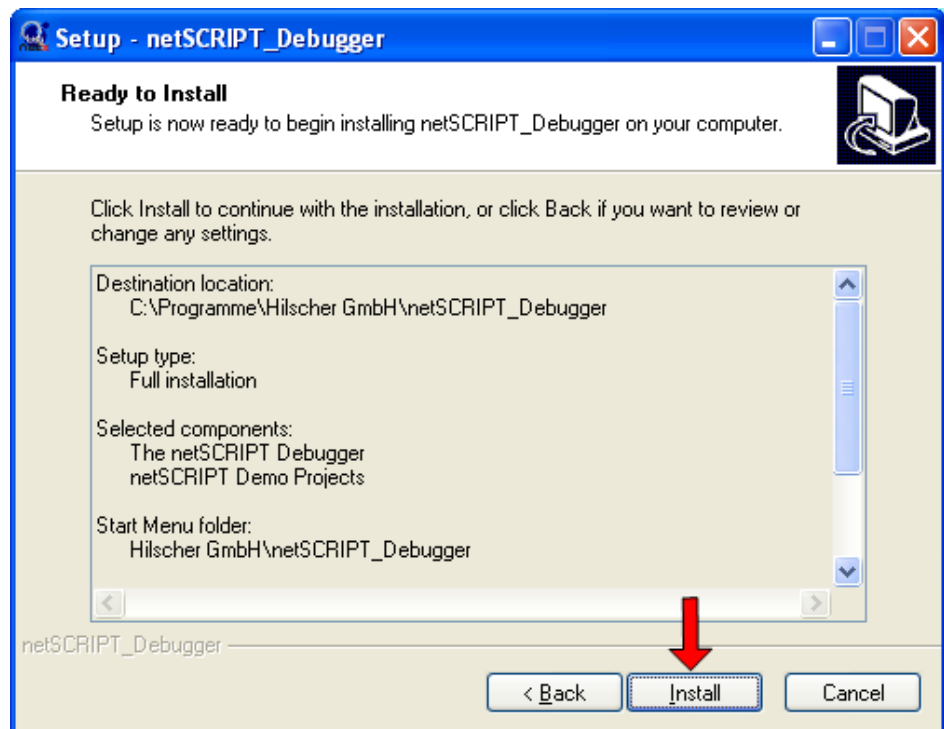


Figure 18: netSCRIPT Debugger Summary

- Click on **Install**.
- The installation starts

10. Finish installation

⇒ When the installation is finished, the following window opens.



Figure 19: netSCRIPT Debugger Installation finished

- Click on **Finish**.
- ⇒ The software is installed.

3 Appendix

3.1 List of Figures

Figure 1: Gateway Solutions Start Screen	7
Figure 2: SYCON.net Setup Language	8
Figure 3: SYCON.net Installation Information	8
Figure 4: SYCON.net License Agreement	10
Figure 5: SYCON.net Customer Information	11
Figure 6: SYCON.net Setup Type	12
Figure 7: SYCON.net Start Installation	13
Figure 8: SYCON.net Installation Status	13
Figure 9: SYCON.net Installation Finish	14
Figure 10: Start of the netSCRIPT Debugger Installation	15
Figure 11: Select netSCRIPT Debugger Language for Setup	15
Figure 12: netSCRIPT Debugger Installation Window	16
Figure 13: netSCRIPT Debugger License Agreement	17
Figure 14: netSCRIPT Debugger Destination Location	18
Figure 15: netSCRIPT Debugger – Select Components	19
Figure 16: netSCRIPT Debugger Start Menu Folder	20
Figure 17: netSCRIPT Debugger – Icon Positions	21
Figure 18: netSCRIPT Debugger Summary	22
Figure 19: netSCRIPT Debugger Installation finished	23

3.2 List of Tables

Table 1: List of Revisions	3
Table 2: Directory Structure of the DVD	5

3.3 Contacts

Headquarters

Germany

Hilscher Gesellschaft für
Systemautomation mbH
Rheinstrasse 15
65795 Hattersheim
Phone: +49 (0) 6190 9907-0
Fax: +49 (0) 6190 9907-50
E-Mail: info@hilscher.com

Support

Phone: +49 (0) 6190 9907-99
E-Mail: de.support@hilscher.com

Subsidiaries

China

Hilscher Systemautomation (Shanghai) Co. Ltd.
200010 Shanghai
Phone: +86 (0) 21-6355-5161
E-Mail: info@hilscher.cn

Support

Phone: +86 (0) 21-6355-5161
E-Mail: cn.support@hilscher.com

France

Hilscher France S.a.r.l.
69500 Bron
Phone: +33 (0) 4 72 37 98 40
E-Mail: info@hilscher.fr

Support

Phone: +33 (0) 4 72 37 98 40
E-Mail: fr.support@hilscher.com

India

Hilscher India Pvt. Ltd.
New Delhi - 110 025
Phone: +91 11 40515640
E-Mail: info@hilscher.in

Italy

Hilscher Italia srl
20090 Vimodrone (MI)
Phone: +39 02 25007068
E-Mail: info@hilscher.it

Support

Phone: +39 02 25007068
E-Mail: it.support@hilscher.com

Japan

Hilscher Japan KK
Tokyo, 160-0022
Phone: +81 (0) 3-5362-0521
E-Mail: info@hilscher.jp

Support

Phone: +81 (0) 3-5362-0521
E-Mail: jp.support@hilscher.com

Korea

Hilscher Korea Inc.
Suwon, 443-810
Phone: +82-31-204-6190
E-Mail: info@hilscher.kr

Switzerland

Hilscher Swiss GmbH
4500 Solothurn
Phone: +41 (0) 32 623 6633
E-Mail: info@hilscher.ch

Support

Phone: +49 (0) 6190 9907-99
E-Mail: ch.support@hilscher.com

USA

Hilscher North America, Inc.
Lisle, IL 60532
Phone: +1 630-505-5301
E-Mail: info@hilscher.us

Support

Phone: +1 630-505-5301
E-Mail: us.support@hilscher.com